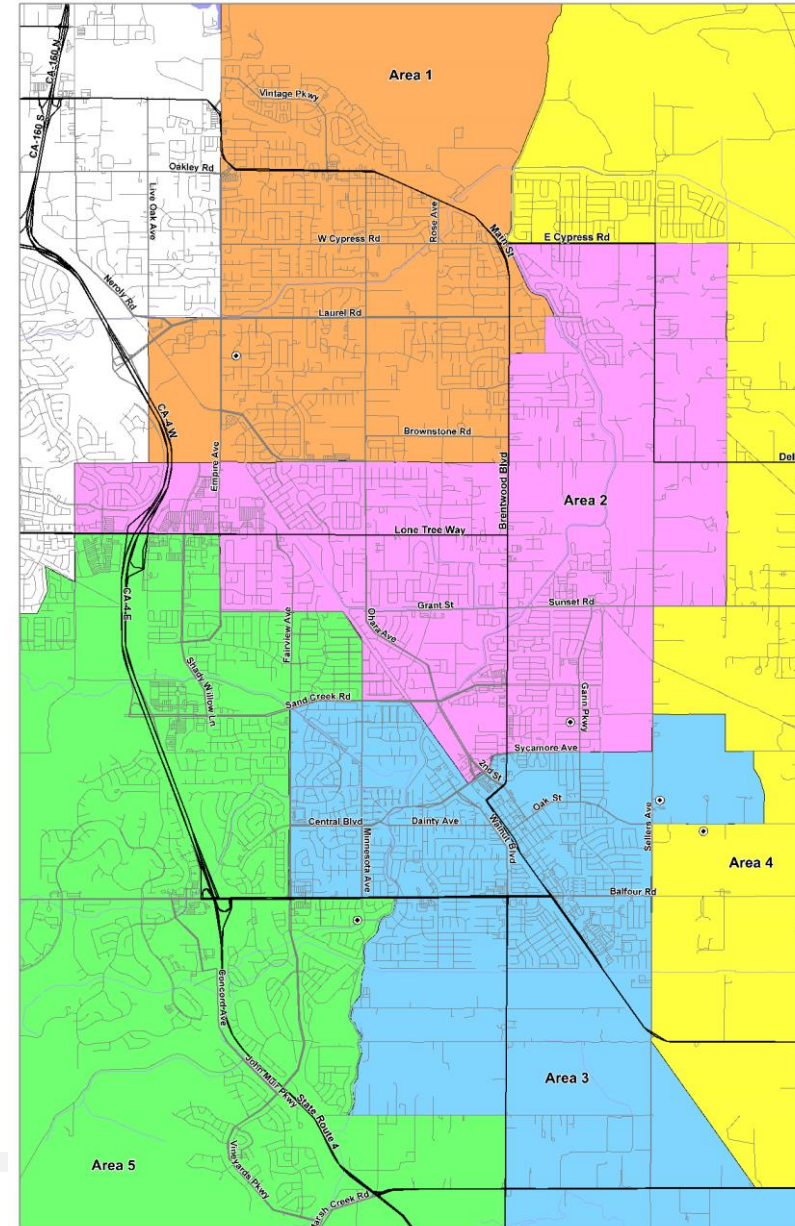
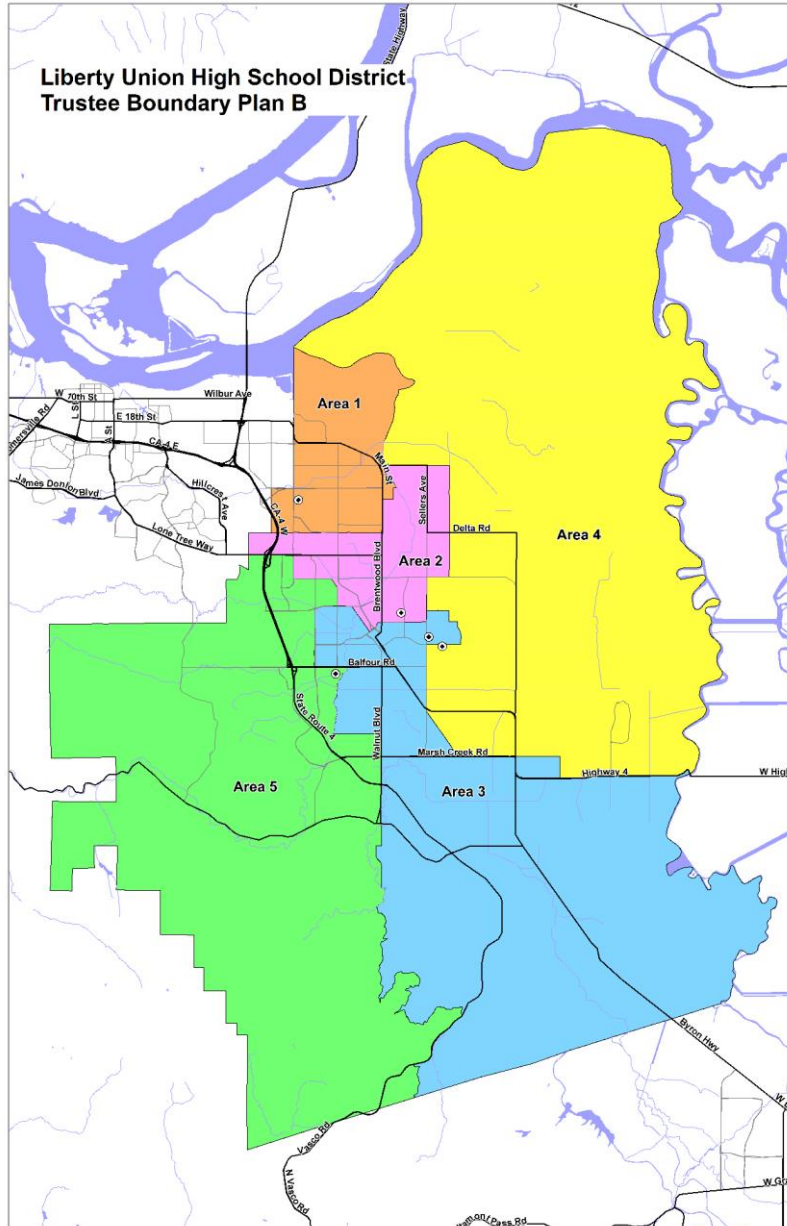


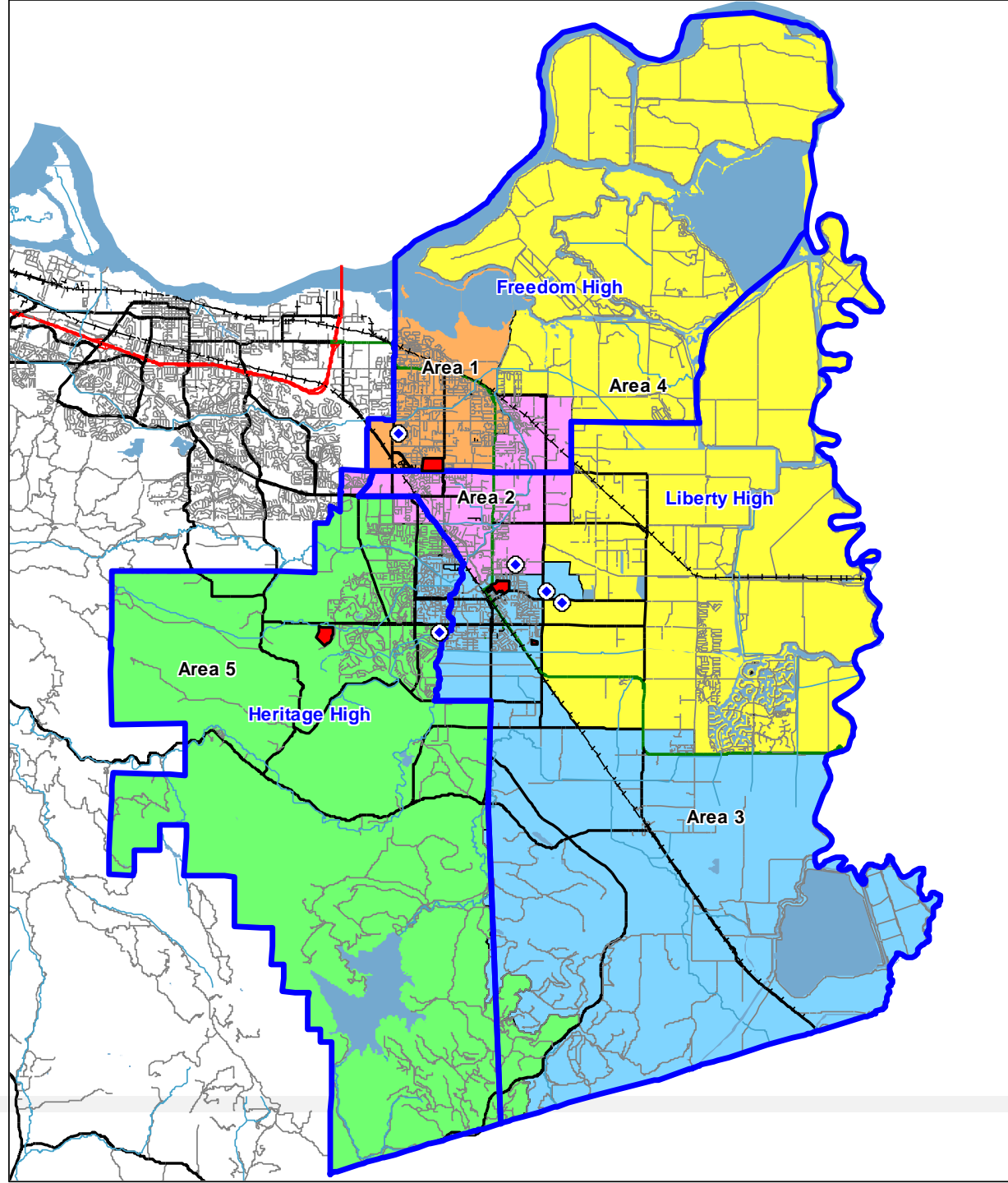
Trustee Area Boundary Map B



Trustee Area Map B

High School Boundaries (blue lines)

School Sites (red)



Total Population and % Deviation, Map B

**Liberty Union High School District
Census 2020 Data Summary by Trustee Areas
Plan B**

Total Population Statistics

Area:	1	2	3	4	5	Total
Trustees:	1	1	1	1	1	5
Population	25,660	25,478	25,876	25,501	25,258	127,773
% of Total Pop.	20.08%	19.94%	20.25%	19.96%	19.77%	
Ideal Pop.	25,555	25,555	25,555	25,555	25,555	
Ideal Pop. %	20.00%	20.00%	20.00%	20.00%	20.00%	
						Peak
Deviation	105	-77	321	-54	-297	618
Dev %	0.41%	-0.30%	1.26%	-0.21%	-1.16%	2.42%

Peak Deviation may not exceed 10%.

Demographics by Trustee Area, Map B

Census Data by Trustee Area including Racial/Ethnic details
Plan B

Area:	1	%	2	%	3	%	4	%	5	%	Total	%
Trustees:	1		1		1		1		1		5	
Total Population	25660		25478		25876		25501		25258		127773	
Hispanic	9818	38.26%	8903	34.94%	8127	31.41%	5603	21.97%	4832	19.13%	37283	29.18%
White - NH	10484	40.86%	8933	35.06%	11830	45.72%	14070	55.17%	13370	52.93%	58687	45.93%
Black - NH	1458	5.68%	2257	8.86%	1384	5.35%	1766	6.93%	1631	6.46%	8496	6.65%
American Indian - NH	71	0.28%	70	0.27%	75	0.29%	69	0.27%	55	0.22%	340	0.27%
Asian - NH	1945	7.58%	3526	13.84%	2490	9.62%	2052	8.05%	3521	13.94%	13534	10.59%
Pacific Islander - NH	130	0.51%	144	0.57%	111	0.43%	134	0.53%	96	0.38%	615	0.48%
Other - NH	159	0.62%	149	0.58%	172	0.66%	129	0.51%	135	0.53%	744	0.58%
Multiple Races - NH	1595	6.22%	1496	5.87%	1687	6.52%	1678	6.58%	1618	6.41%	8074	6.32%
18+ Population	19008		18254		18760		19495		19551		95068	
Hispanic	6571	34.57%	6018	32.97%	5445	29.02%	3738	19.17%	3311	16.94%	25083	26.38%
White - NH	8495	44.69%	6818	37.35%	9235	49.23%	11534	59.16%	11180	57.18%	47262	49.71%
Black - NH	1072	5.64%	1622	8.89%	1003	5.35%	1278	6.56%	1228	6.28%	6203	6.52%
American Indian - NH	56	0.29%	56	0.31%	50	0.27%	58	0.30%	39	0.20%	259	0.27%
Asian - NH	1522	5.93%	2672	10.49%	1866	7.21%	1664	6.53%	2655	10.51%	10379	8.12%
Pacific Islander - NH	108	0.57%	122	0.67%	88	0.47%	109	0.56%	70	0.36%	497	0.52%
Other - NH	112	0.59%	89	0.49%	116	0.62%	89	0.46%	92	0.47%	498	0.52%
Multiple Races - NH	1072	5.64%	857	4.69%	957	5.10%	1025	5.26%	976	4.99%	4887	5.14%
CVAP	16513		15014		16963		17667		19444		85601	
Hispanic	4130	25.01%	4001	26.65%	4049	23.87%	2863	16.21%	2922	15.03%	17965	20.99%
White - NH	8646	52.36%	6989	46.55%	9550	56.30%	12189	68.99%	12444	64.00%	49818	58.20%
Black - NH	1251	7.58%	1542	10.27%	1275	7.52%	948	5.37%	1492	7.67%	6508	7.60%
American Indian - NH	89	0.54%	69	0.46%	152	0.90%	90	0.51%	41	0.21%	441	0.52%
Asian - NH	1194	7.23%	1945	12.95%	1076	6.34%	1064	6.02%	1837	9.45%	7116	8.31%
Pacific Islander - NH	167	1.01%	31	0.21%	104	0.61%	56	0.32%	127	0.65%	485	0.57%
Multiple Races - NH	1036	6.27%	437	2.91%	757	4.46%	457	2.59%	581	2.99%	3268	3.82%

NH = Not of Hispanic Origin
CVAP = Citizen Voting Age Population