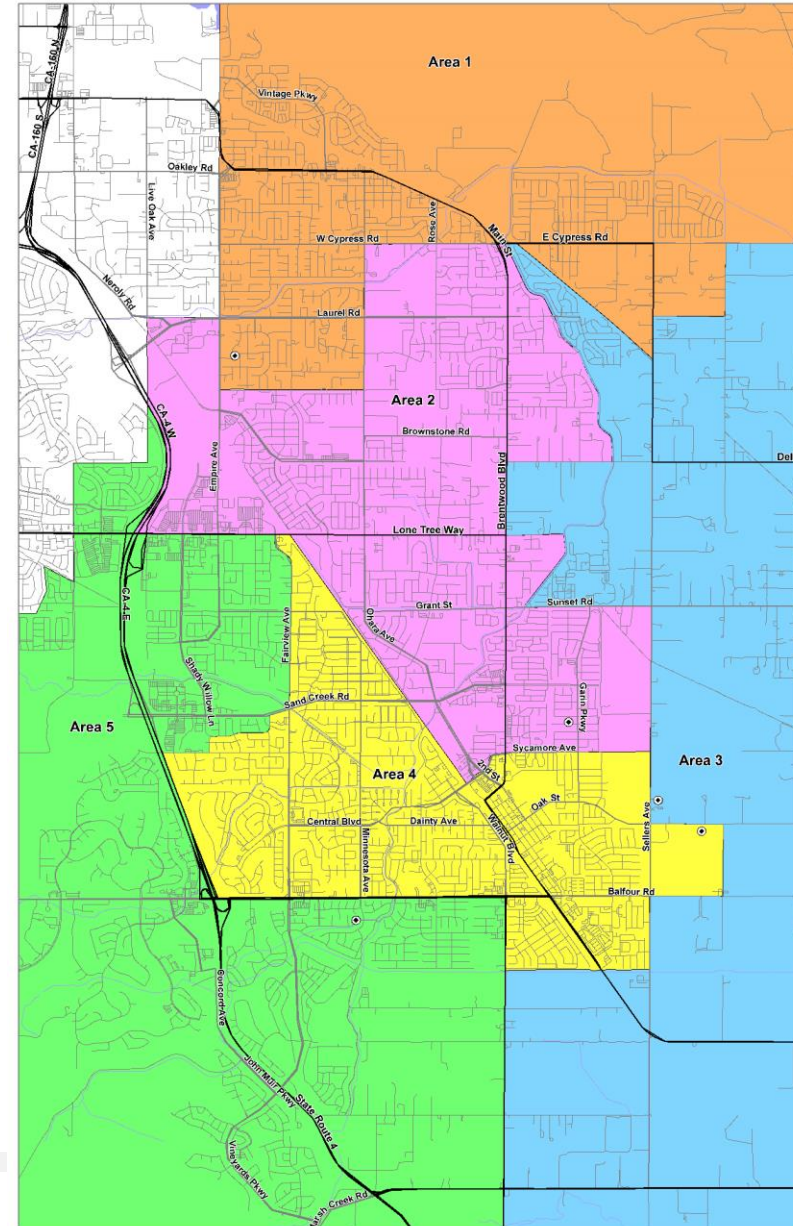
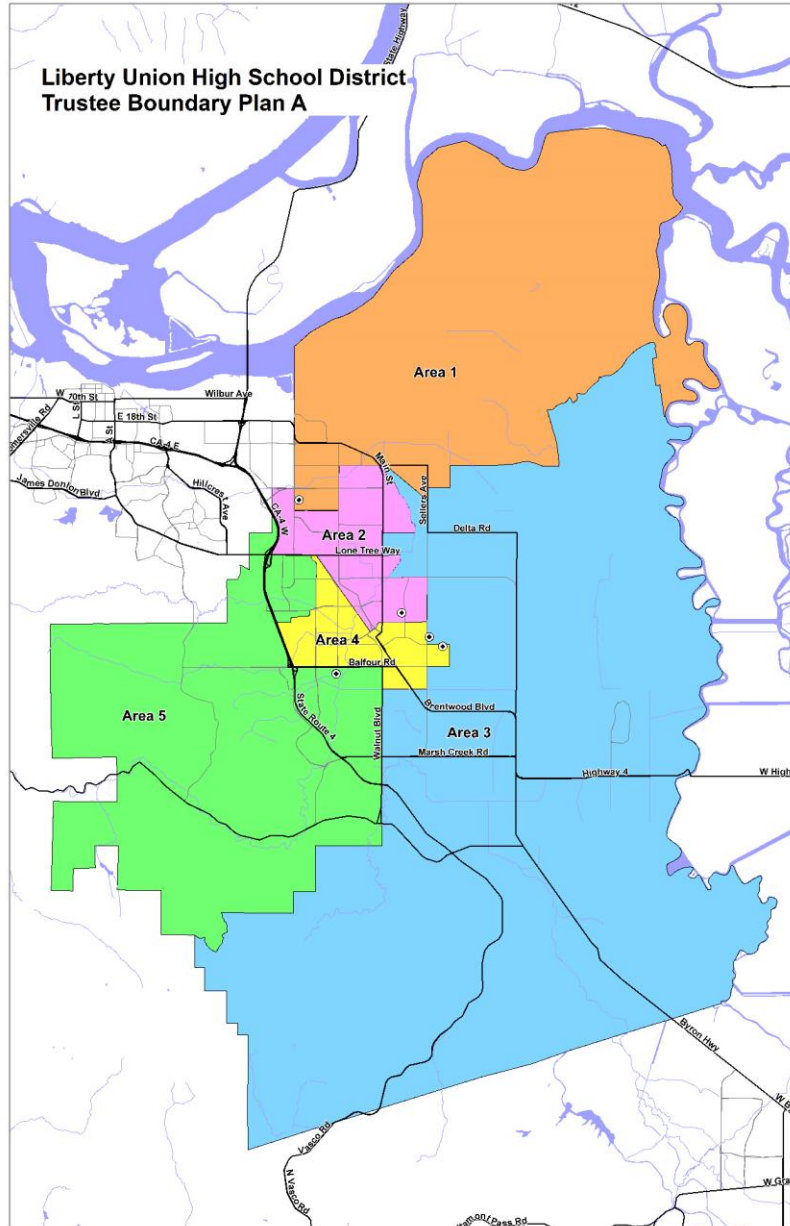


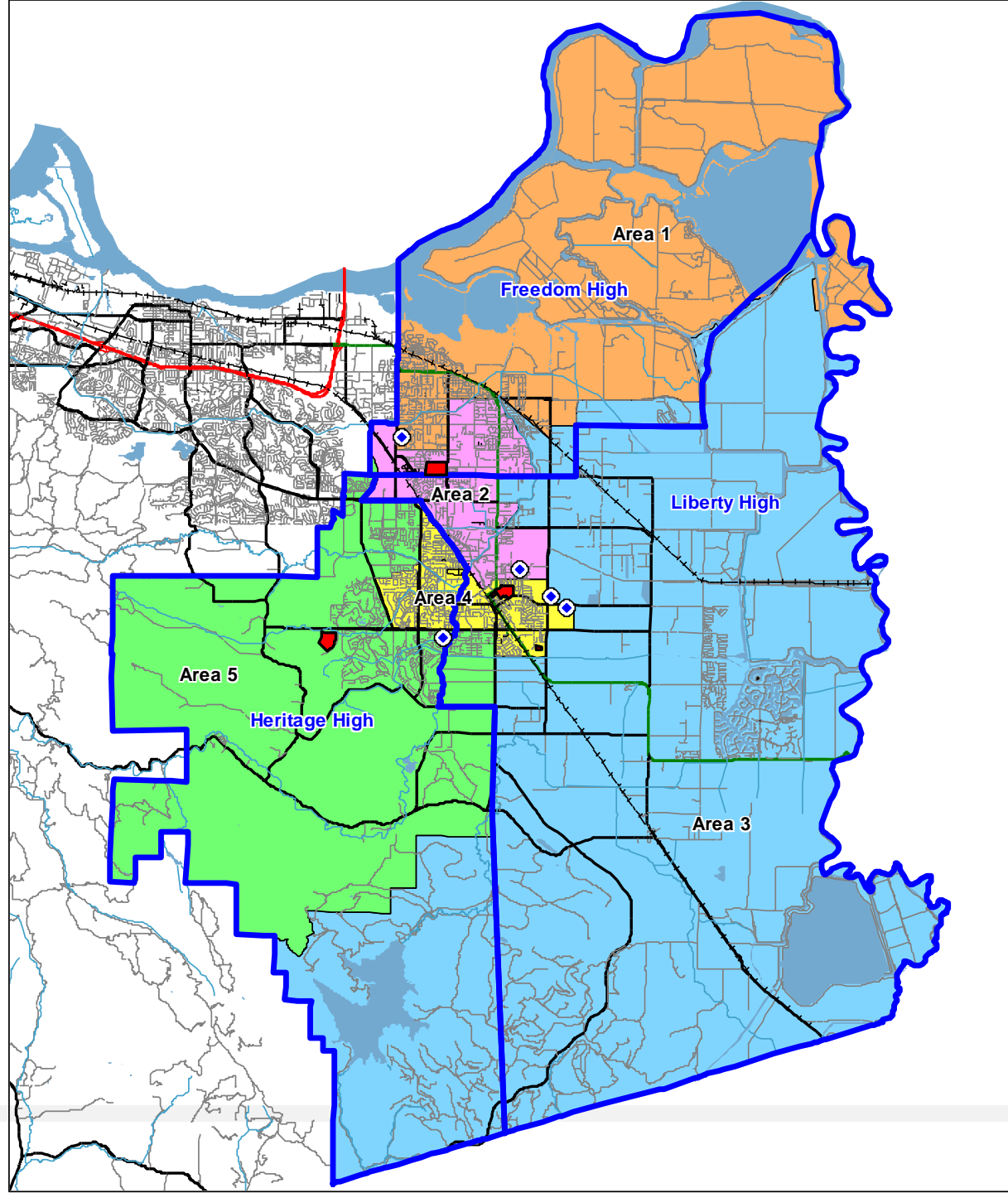
# Trustee Area Boundary Map A



# Trustee Area Map A

High School Boundaries (blue lines)

School Sites (red)



# Total Population and % Deviation, Map A

**Liberty Union High School District  
 Census 2020 Data Summary by Trustee Areas  
 Plan A**

**Total Population Statistics**

Area:	1	2	3	4	5	Total
Trustees:	1	1	1	1	1	5
Population	25,615	25,417	24,719	26,521	25,501	<b>127,773</b>
% of Total Pop.	20.05%	19.89%	19.35%	20.76%	19.96%	
Ideal Pop.	25,555	25,555	25,555	25,555	25,555	
Ideal Pop. %	20.00%	20.00%	20.00%	20.00%	20.00%	
						<b>Peak</b>
Deviation	60	-138	-836	966	-54	<b>1,802</b>
Dev %	0.24%	-0.54%	-3.27%	3.78%	-0.21%	<b>7.05%</b>

Peak Deviation may not exceed 10%.

# Demographics by Trustee Area, Map A

Census Data by Trustee Area including Racial/Ethnic details  
Plan A

Area:	1	%	2	%	3	%	4	%	5	%	Total	%
Trustees:	1		1		1		1		1		5	
<b>Total Population</b>	<b>25615</b>		<b>25417</b>		<b>24719</b>		<b>26521</b>		<b>25501</b>		<b>127773</b>	
Hispanic	9465	36.95%	8790	34.58%	6329	25.60%	7683	28.97%	5016	19.67%	37283	29.18%
White - NH	10479	40.91%	9335	36.73%	13837	55.98%	12522	47.22%	12514	49.07%	58687	45.93%
Black - NH	1744	6.81%	1948	7.66%	1356	5.49%	1505	5.67%	1943	7.62%	8496	6.65%
American Indian - NH	83	0.32%	51	0.20%	71	0.29%	76	0.29%	59	0.23%	340	0.27%
Asian - NH	1897	7.41%	3457	13.60%	1421	5.75%	2673	10.08%	4086	16.02%	13534	10.59%
Pacific Islander - NH	157	0.61%	135	0.53%	108	0.44%	102	0.38%	113	0.44%	615	0.48%
Other - NH	157	0.61%	148	0.58%	131	0.53%	173	0.65%	135	0.53%	744	0.58%
Multiple Races - NH	1633	6.38%	1553	6.11%	1466	5.93%	1787	6.74%	1635	6.41%	8074	6.32%
<b>18+ Population</b>	<b>19126</b>		<b>18242</b>		<b>18806</b>		<b>19366</b>		<b>19528</b>		<b>95068</b>	
Hispanic	6320	33.04%	5887	32.27%	4293	22.83%	5111	26.39%	3472	17.78%	25083	26.38%
White - NH	8672	45.34%	7136	39.12%	11209	59.60%	9858	50.90%	10387	53.19%	47262	49.71%
Black - NH	1268	6.63%	1415	7.76%	967	5.14%	1110	5.73%	1443	7.39%	6203	6.52%
American Indian - NH	60	0.31%	42	0.23%	66	0.35%	52	0.27%	39	0.20%	259	0.27%
Asian - NH	1528	5.97%	2616	10.29%	1164	4.71%	2024	7.63%	3047	11.95%	10379	8.12%
Pacific Islander - NH	124	0.65%	120	0.66%	95	0.51%	79	0.41%	79	0.40%	497	0.52%
Other - NH	107	0.56%	102	0.56%	83	0.44%	116	0.60%	90	0.46%	498	0.52%
Multiple Races - NH	1047	5.47%	924	5.07%	929	4.94%	1016	5.25%	971	4.97%	4887	5.14%
<b>CVAP</b>	<b>15678</b>		<b>15097</b>		<b>18143</b>		<b>17327</b>		<b>19356</b>		<b>85601</b>	
Hispanic	3920	25.00%	3767	24.95%	3377	18.61%	3895	22.48%	3006	15.53%	17965	20.99%
White - NH	8508	54.27%	7285	48.25%	12376	68.21%	10081	58.18%	11568	59.76%	49818	58.20%
Black - NH	1196	7.63%	1306	8.65%	1037	5.72%	1329	7.67%	1640	8.47%	6508	7.60%
American Indian - NH	118	0.75%	65	0.43%	78	0.43%	153	0.88%	27	0.14%	441	0.52%
Asian - NH	943	6.01%	1934	12.81%	815	4.49%	1017	5.87%	2407	12.44%	7116	8.31%
Pacific Islander - NH	211	1.35%	26	0.17%	17	0.09%	93	0.54%	138	0.71%	485	0.57%
Multiple Races - NH	782	4.99%	714	4.73%	443	2.44%	759	4.38%	570	2.94%	3268	3.82%

NH = Not of Hispanic Origin  
CVAP = Citizen Voting Age Population