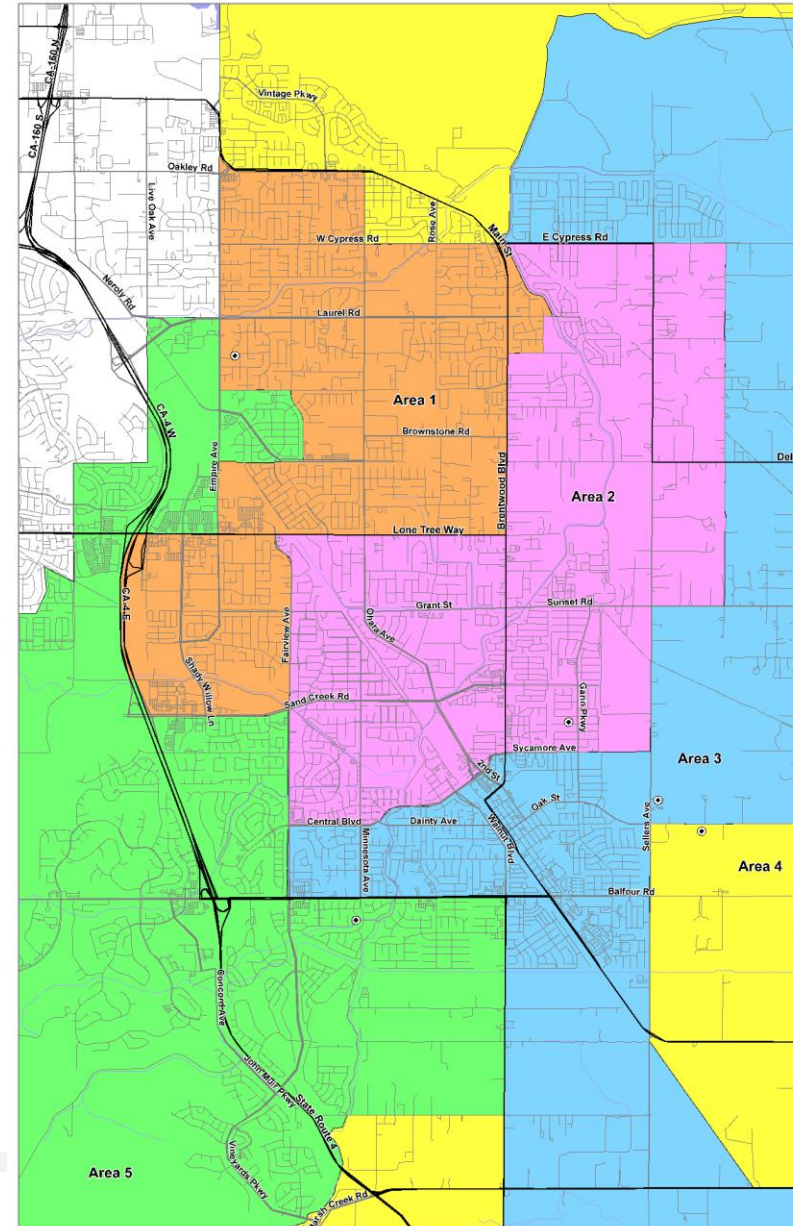
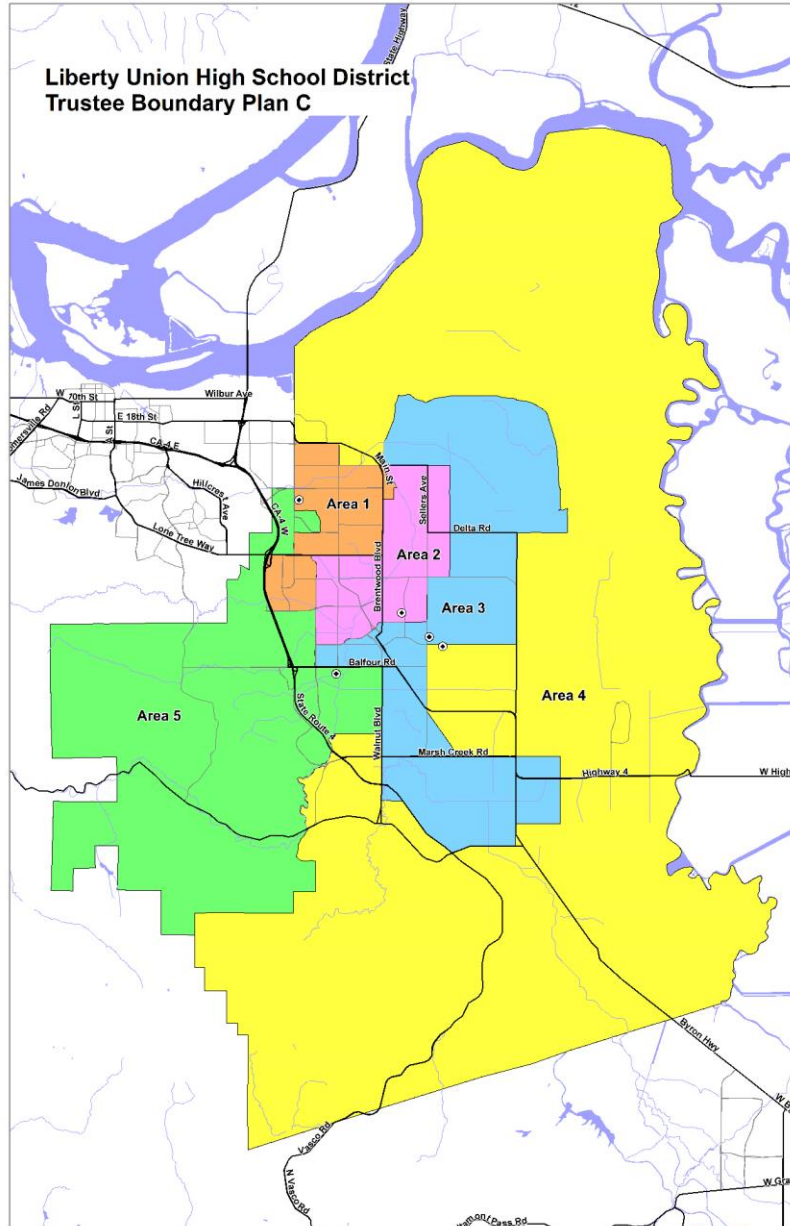


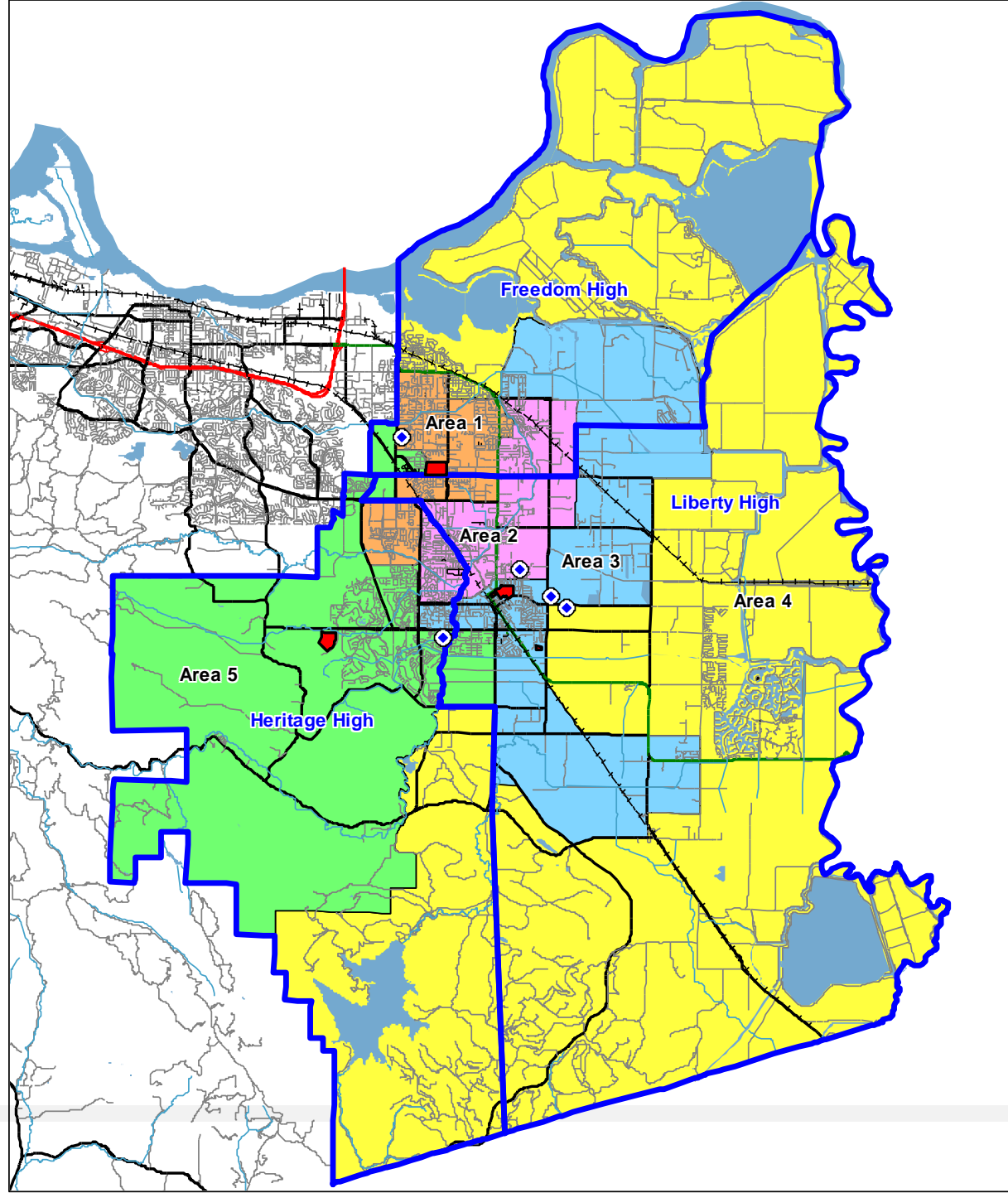
Trustee Area Boundary Map C



Trustee Area Map C

High School Boundaries (blue lines)

School Sites (red)



Total Population and % Deviation, Map C

**Liberty Union High School District
Census 2020 Data Summary by Trustee Areas
Plan C**

Total Population Statistics

Area:	1	2	3	4	5	Total
Trustees:	1	1	1	1	1	5
Population	25,298	25,539	25,748	25,879	25,309	127,773
% of Total Pop.	19.80%	19.99%	20.15%	20.25%	19.81%	
Ideal Pop.	25,555	25,555	25,555	25,555	25,555	
Ideal Pop. %	20.00%	20.00%	20.00%	20.00%	20.00%	
						Peak
Deviation	-257	-16	193	324	-246	581
Dev %	-1.00%	-0.06%	0.76%	1.27%	-0.96%	2.27%

Peak Deviation may not exceed 10%.

Demographics by Trustee Area, Map C

Census Data by Trustee Area including Racial/Ethnic details
Plan C

Area:	1	%	2	%	3	%	4	%	5	%	Total	%
Trustees:	1		1		1		1		1		5	
Total Population	25298		25539		25748		25879		25309		127773	
Hispanic	8325	32.91%	8824	34.55%	8231	31.97%	6963	26.91%	4940	19.52%	37283	29.18%
White - NH	10259	40.55%	9951	38.96%	10739	41.71%	14393	55.62%	13345	52.73%	58687	45.93%
Black - NH	1710	6.76%	1987	7.78%	1921	7.46%	1285	4.97%	1593	6.29%	8496	6.65%
American Indian - NH	60	0.24%	75	0.29%	66	0.26%	84	0.32%	55	0.22%	340	0.27%
Asian - NH	3112	12.30%	2849	11.16%	2756	10.70%	1274	4.92%	3543	14.00%	13534	10.59%
Pacific Islander - NH	151	0.60%	108	0.42%	149	0.58%	124	0.48%	83	0.33%	615	0.48%
Other - NH	140	0.55%	172	0.67%	172	0.67%	127	0.49%	133	0.53%	744	0.58%
Multiple Races - NH	1541	6.09%	1573	6.16%	1714	6.66%	1629	6.29%	1617	6.39%	8074	6.32%
18+ Population	18430		18381		18463		20010		19784		95068	
Hispanic	5585	30.30%	5960	32.42%	5420	29.36%	4685	23.41%	3433	17.35%	25083	26.38%
White - NH	8060	43.73%	7631	41.52%	8329	45.11%	11970	59.82%	11272	56.98%	47262	49.71%
Black - NH	1248	6.77%	1452	7.90%	1380	7.47%	935	4.67%	1188	6.00%	6203	6.52%
American Indian - NH	42	0.23%	56	0.30%	44	0.24%	76	0.38%	41	0.21%	259	0.27%
Asian - NH	2335	9.23%	2179	8.53%	2097	8.14%	1079	4.17%	2689	10.62%	10379	8.12%
Pacific Islander - NH	122	0.66%	96	0.52%	121	0.66%	102	0.51%	56	0.28%	497	0.52%
Other - NH	87	0.47%	108	0.59%	118	0.64%	91	0.45%	94	0.48%	498	0.52%
Multiple Races - NH	951	5.16%	899	4.89%	954	5.17%	1072	5.36%	1011	5.11%	4887	5.14%
CVAP	15996		14668		15556		19443		19938		85601	
Hispanic	4089	25.56%	3566	24.31%	3943	25.35%	3531	18.16%	2836	14.22%	17965	20.99%
White - NH	8221	51.39%	7551	51.48%	8462	54.40%	12947	66.59%	12637	63.38%	49818	58.20%
Black - NH	1379	8.62%	1524	10.39%	1288	8.28%	1031	5.30%	1286	6.45%	6508	7.60%
American Indian - NH	74	0.46%	60	0.41%	160	1.03%	117	0.60%	30	0.15%	441	0.52%
Asian - NH	1459	9.12%	1256	8.56%	1126	7.24%	1001	5.15%	2274	11.41%	7116	8.31%
Pacific Islander - NH	68	0.43%	31	0.21%	93	0.60%	155	0.80%	138	0.69%	485	0.57%
Multiple Races - NH	706	4.41%	680	4.64%	484	3.11%	661	3.40%	737	3.70%	3268	3.82%

NH = Not of Hispanic Origin
CVAP = Citizen Voting Age Population