



Trustee Boundary Maps

Liberty Union High School District

Presented by Ken Reynolds
President, SchoolWorks, Inc.

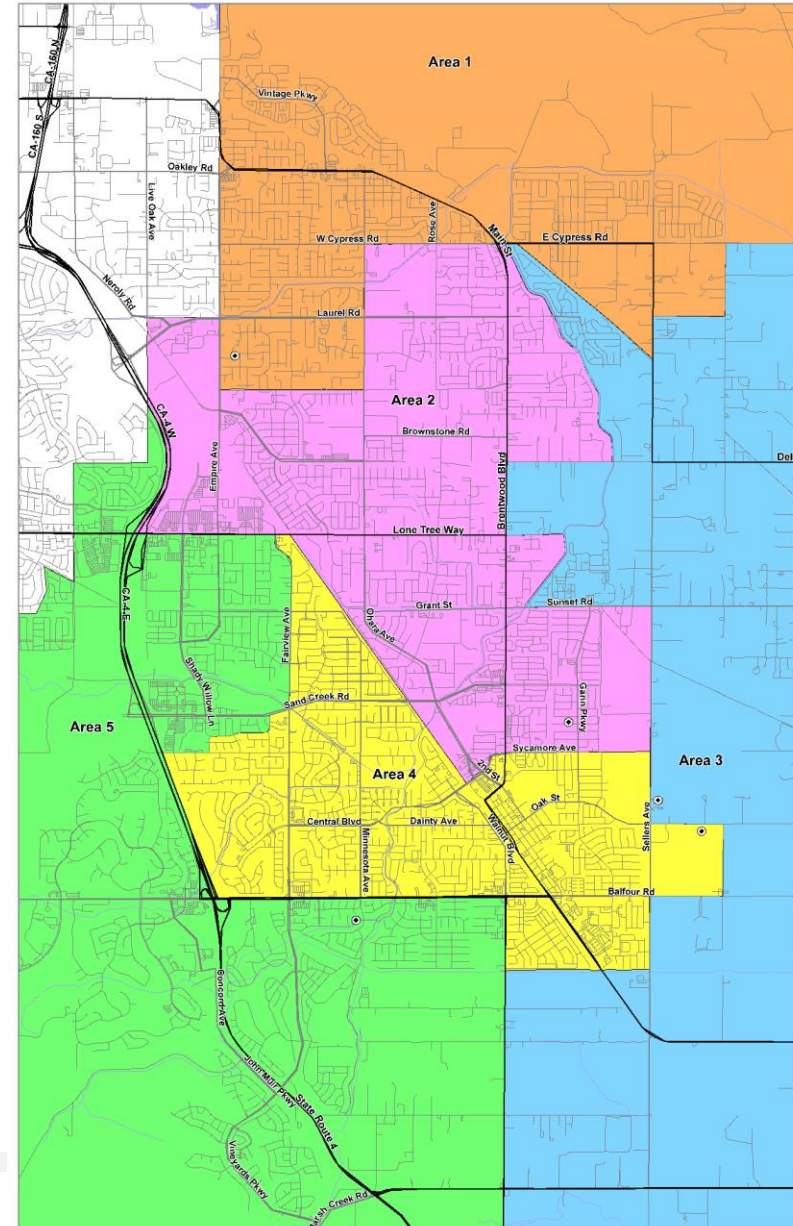
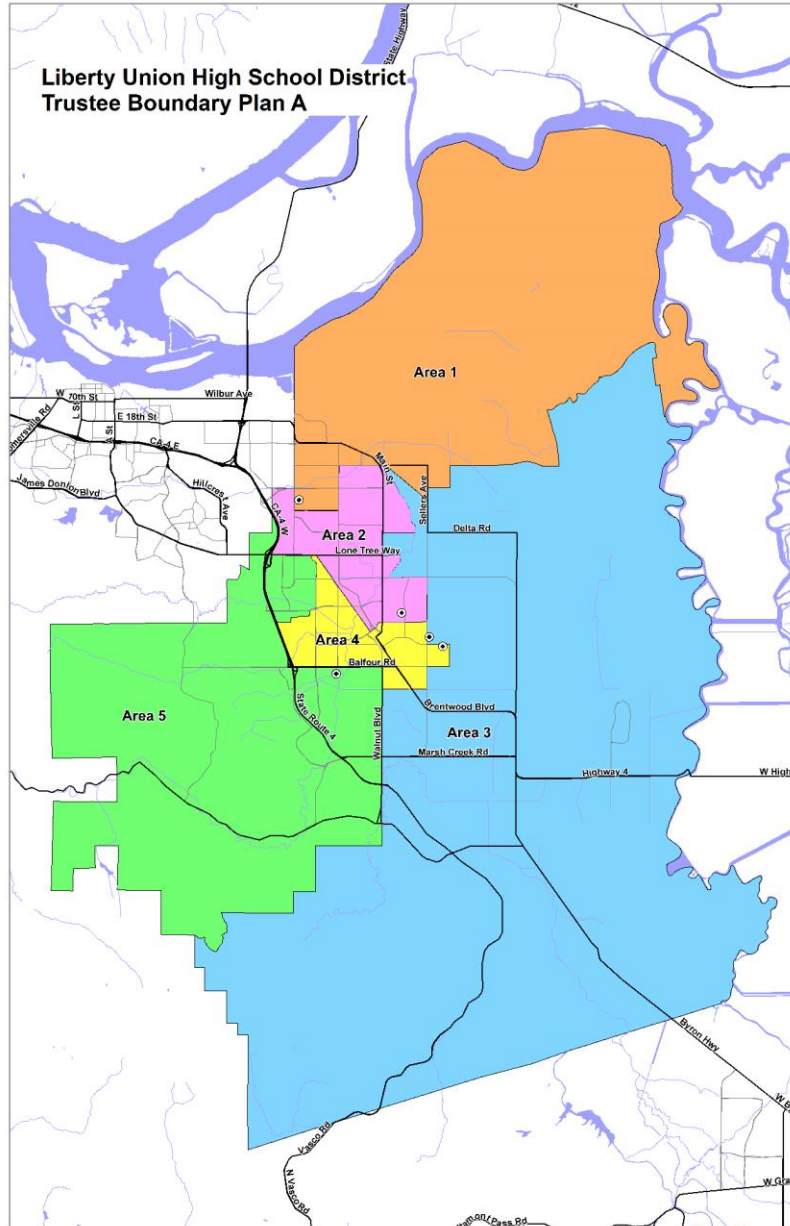


INTRODUCTION

This presentation illustrates several options for the District to draw maps that balance the population for each of the trustee areas..

- The general guidelines for drawing trustee boundaries include:
 - Topography & Geography
 - Communities
 - Cohesiveness & Contiguous
 - Location of Current Trustees
 - Equal Population
- For each scenario, there are maps showing the boundaries for each trustee area, a table showing the population in each trustee area and the variance from the ideal population. The peak deviation must be less than 10% for the maps to meet the legal requirements. Finally, details of the racial/ethnic populations are provided.

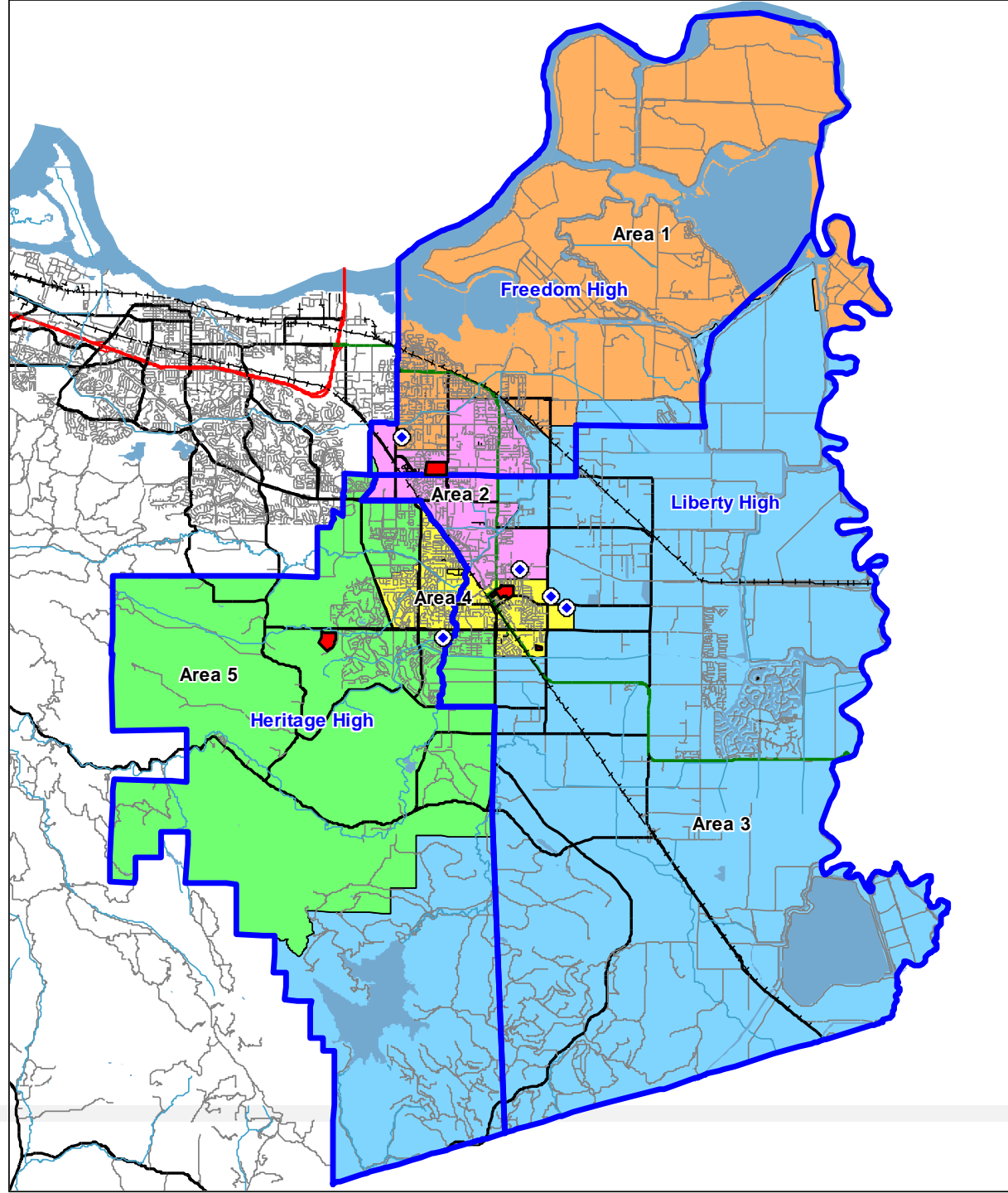
Trustee Area Boundary Map A



Trustee Area Map A

High School Boundaries (blue lines)

School Sites (red)



Total Population and % Deviation, Map A

**Liberty Union High School District
 Census 2020 Data Summary by Trustee Areas
 Plan A**

Total Population Statistics

Area:	1	2	3	4	5	Total
Trustees:	1	1	1	1	1	5
Population	25,615	25,417	24,719	26,521	25,501	127,773
% of Total Pop.	20.05%	19.89%	19.35%	20.76%	19.96%	
Ideal Pop.	25,555	25,555	25,555	25,555	25,555	
Ideal Pop. %	20.00%	20.00%	20.00%	20.00%	20.00%	
						Peak
Deviation	60	-138	-836	966	-54	1,802
Dev %	0.24%	-0.54%	-3.27%	3.78%	-0.21%	7.05%

Peak Deviation may not exceed 10%.

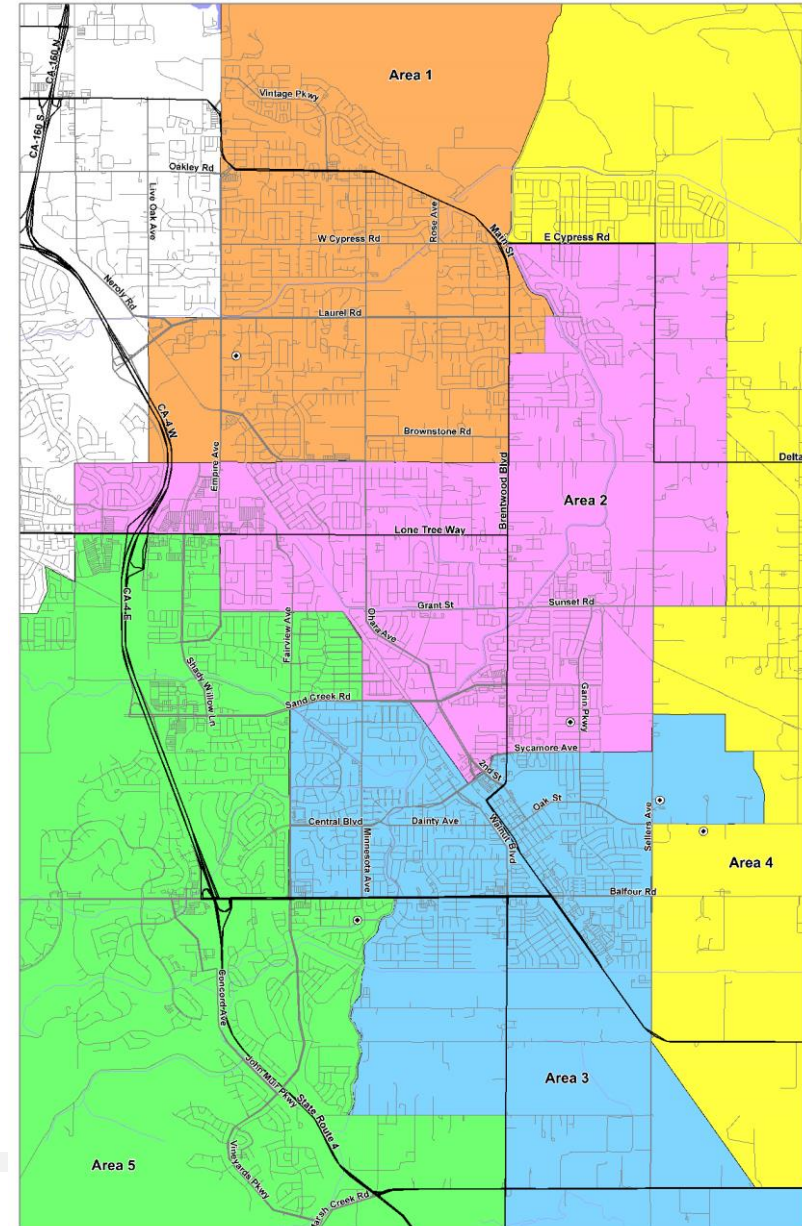
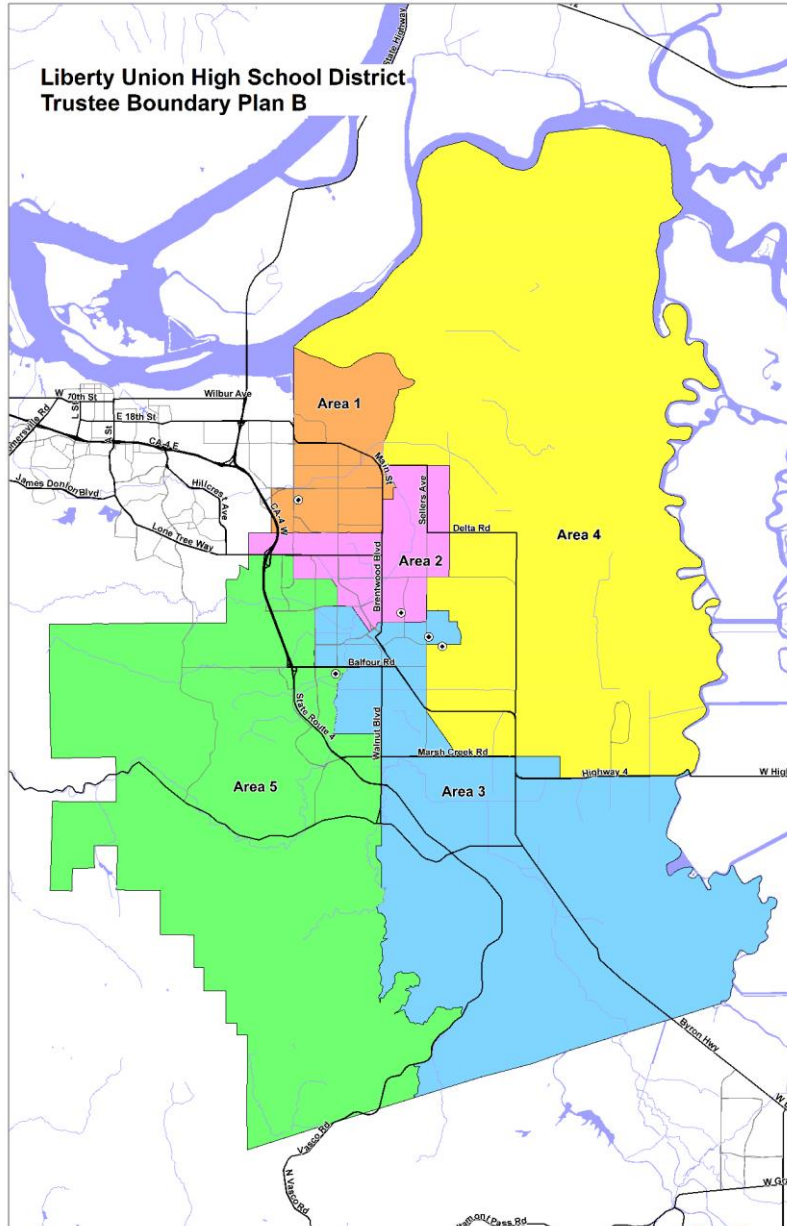
Demographics by Trustee Area, Map A

Census Data by Trustee Area including Racial/Ethnic details
Plan A

Area:	1	%	2	%	3	%	4	%	5	%	Total	%
Trustees:	1		1		1		1		1		5	
Total Population	25615		25417		24719		26521		25501		127773	
Hispanic	9465	36.95%	8790	34.58%	6329	25.60%	7683	28.97%	5016	19.67%	37283	29.18%
White - NH	10479	40.91%	9335	36.73%	13837	55.98%	12522	47.22%	12514	49.07%	58687	45.93%
Black - NH	1744	6.81%	1948	7.66%	1356	5.49%	1505	5.67%	1943	7.62%	8496	6.65%
American Indian - NH	83	0.32%	51	0.20%	71	0.29%	76	0.29%	59	0.23%	340	0.27%
Asian - NH	1897	7.41%	3457	13.60%	1421	5.75%	2673	10.08%	4086	16.02%	13534	10.59%
Pacific Islander - NH	157	0.61%	135	0.53%	108	0.44%	102	0.38%	113	0.44%	615	0.48%
Other - NH	157	0.61%	148	0.58%	131	0.53%	173	0.65%	135	0.53%	744	0.58%
Multiple Races - NH	1633	6.38%	1553	6.11%	1466	5.93%	1787	6.74%	1635	6.41%	8074	6.32%
18+ Population	19126		18242		18806		19366		19528		95068	
Hispanic	6320	33.04%	5887	32.27%	4293	22.83%	5111	26.39%	3472	17.78%	25083	26.38%
White - NH	8672	45.34%	7136	39.12%	11209	59.60%	9858	50.90%	10387	53.19%	47262	49.71%
Black - NH	1268	6.63%	1415	7.76%	967	5.14%	1110	5.73%	1443	7.39%	6203	6.52%
American Indian - NH	60	0.31%	42	0.23%	66	0.35%	52	0.27%	39	0.20%	259	0.27%
Asian - NH	1528	5.97%	2616	10.29%	1164	4.71%	2024	7.63%	3047	11.95%	10379	8.12%
Pacific Islander - NH	124	0.65%	120	0.66%	95	0.51%	79	0.41%	79	0.40%	497	0.52%
Other - NH	107	0.56%	102	0.56%	83	0.44%	116	0.60%	90	0.46%	498	0.52%
Multiple Races - NH	1047	5.47%	924	5.07%	929	4.94%	1016	5.25%	971	4.97%	4887	5.14%
CVAP	15678		15097		18143		17327		19356		85601	
Hispanic	3920	25.00%	3767	24.95%	3377	18.61%	3895	22.48%	3006	15.53%	17965	20.99%
White - NH	8508	54.27%	7285	48.25%	12376	68.21%	10081	58.18%	11568	59.76%	49818	58.20%
Black - NH	1196	7.63%	1306	8.65%	1037	5.72%	1329	7.67%	1640	8.47%	6508	7.60%
American Indian - NH	118	0.75%	65	0.43%	78	0.43%	153	0.88%	27	0.14%	441	0.52%
Asian - NH	943	6.01%	1934	12.81%	815	4.49%	1017	5.87%	2407	12.44%	7116	8.31%
Pacific Islander - NH	211	1.35%	26	0.17%	17	0.09%	93	0.54%	138	0.71%	485	0.57%
Multiple Races - NH	782	4.99%	714	4.73%	443	2.44%	759	4.38%	570	2.94%	3268	3.82%

NH = Not of Hispanic Origin
CVAP = Citizen Voting Age Population

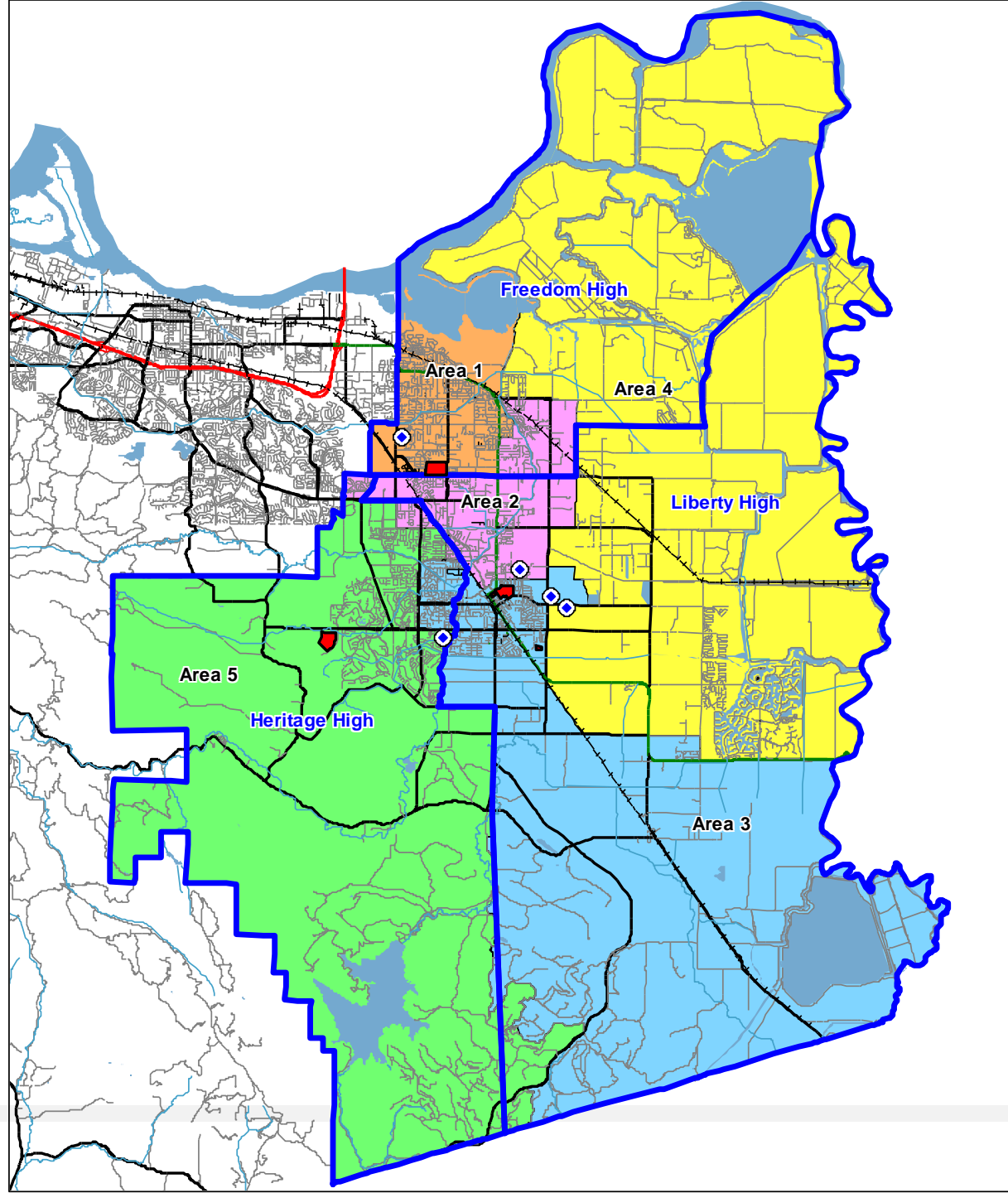
Trustee Area Boundary Map B



Trustee Area Map B

High School Boundaries (blue lines)

School Sites (red)



Total Population and % Deviation, Map B

**Liberty Union High School District
Census 2020 Data Summary by Trustee Areas
Plan B**

Total Population Statistics

Area:	1	2	3	4	5	Total
Trustees:	1	1	1	1	1	5
Population	25,660	25,478	25,876	25,501	25,258	127,773
% of Total Pop.	20.08%	19.94%	20.25%	19.96%	19.77%	
Ideal Pop.	25,555	25,555	25,555	25,555	25,555	
Ideal Pop. %	20.00%	20.00%	20.00%	20.00%	20.00%	
						Peak
Deviation	105	-77	321	-54	-297	618
Dev %	0.41%	-0.30%	1.26%	-0.21%	-1.16%	2.42%

Peak Deviation may not exceed 10%.

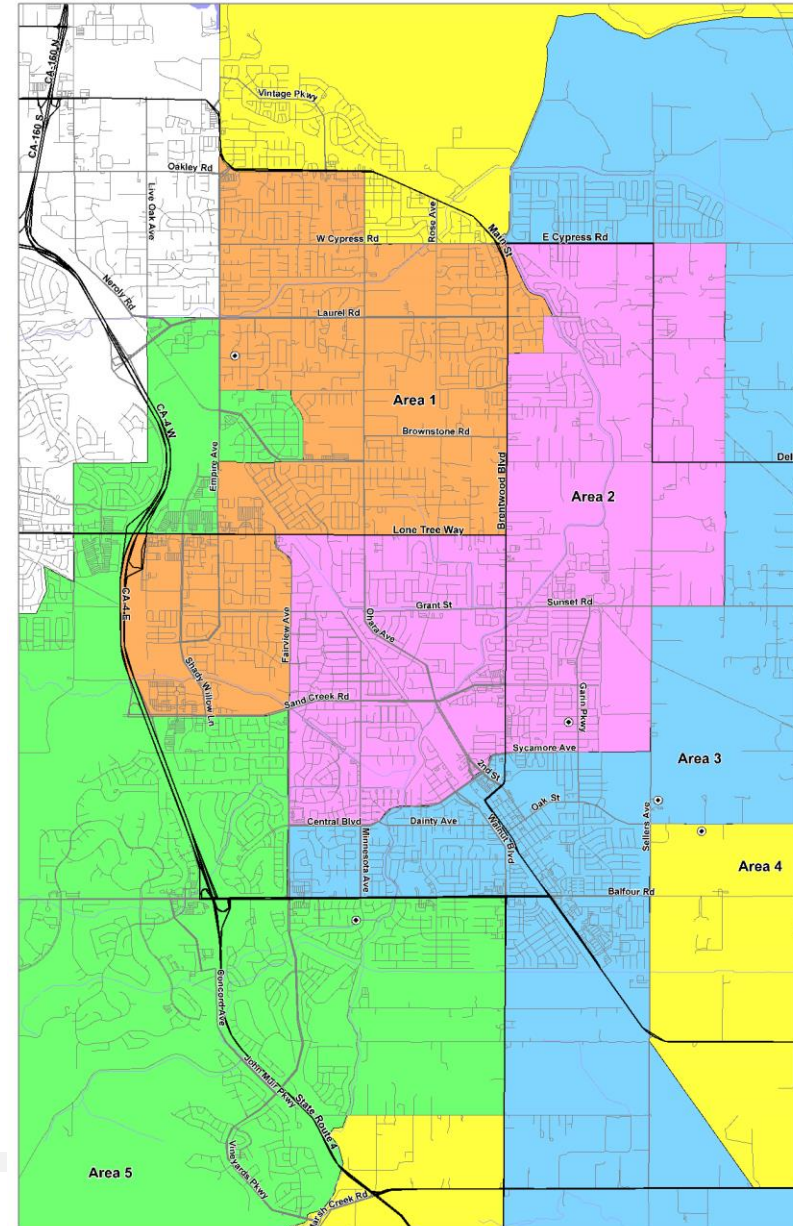
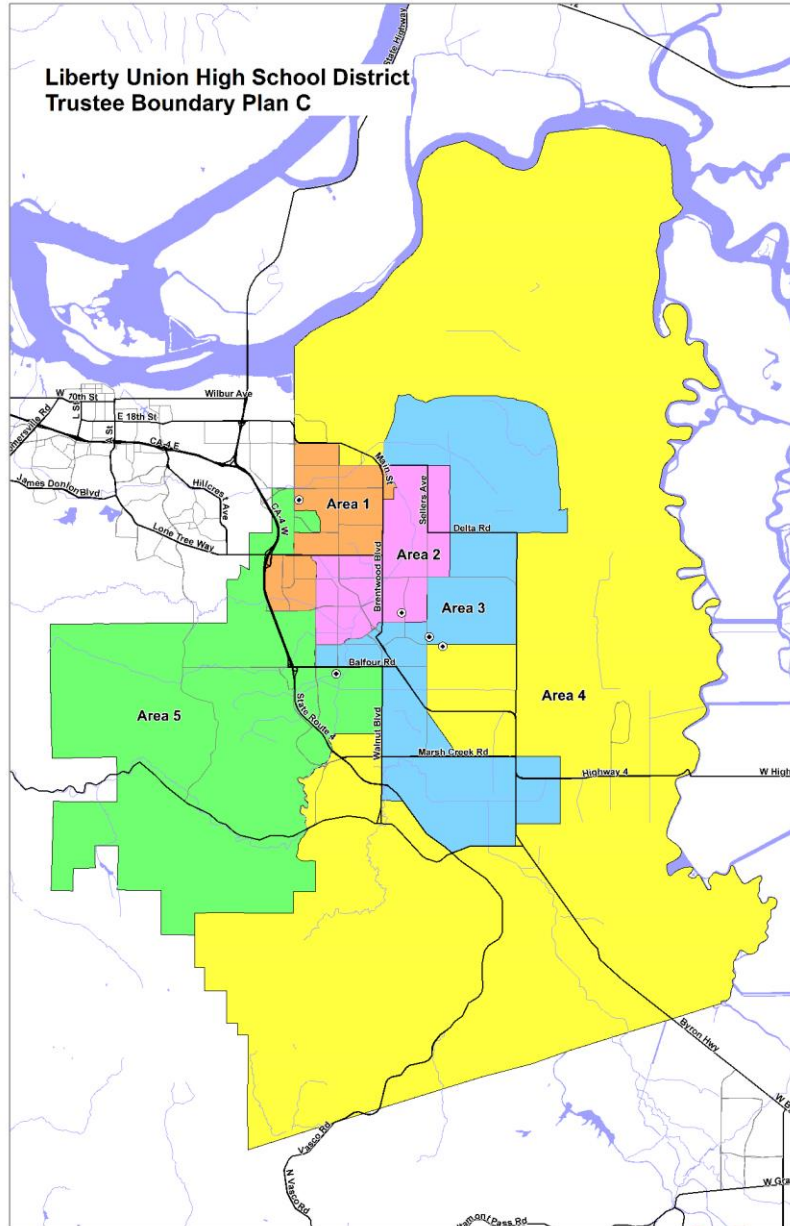
Demographics by Trustee Area, Map B

Census Data by Trustee Area including Racial/Ethnic details
Plan B

Area:	1	%	2	%	3	%	4	%	5	%	Total	%
Trustees:	1		1		1		1		1		5	
Total Population	25660		25478		25876		25501		25258		127773	
Hispanic	9818	38.26%	8903	34.94%	8127	31.41%	5603	21.97%	4832	19.13%	37283	29.18%
White - NH	10484	40.86%	8933	35.06%	11830	45.72%	14070	55.17%	13370	52.93%	58687	45.93%
Black - NH	1458	5.68%	2257	8.86%	1384	5.35%	1766	6.93%	1631	6.46%	8496	6.65%
American Indian - NH	71	0.28%	70	0.27%	75	0.29%	69	0.27%	55	0.22%	340	0.27%
Asian - NH	1945	7.58%	3526	13.84%	2490	9.62%	2052	8.05%	3521	13.94%	13534	10.59%
Pacific Islander - NH	130	0.51%	144	0.57%	111	0.43%	134	0.53%	96	0.38%	615	0.48%
Other - NH	159	0.62%	149	0.58%	172	0.66%	129	0.51%	135	0.53%	744	0.58%
Multiple Races - NH	1595	6.22%	1496	5.87%	1687	6.52%	1678	6.58%	1618	6.41%	8074	6.32%
18+ Population	19008		18254		18760		19495		19551		95068	
Hispanic	6571	34.57%	6018	32.97%	5445	29.02%	3738	19.17%	3311	16.94%	25083	26.38%
White - NH	8495	44.69%	6818	37.35%	9235	49.23%	11534	59.16%	11180	57.18%	47262	49.71%
Black - NH	1072	5.64%	1622	8.89%	1003	5.35%	1278	6.56%	1228	6.28%	6203	6.52%
American Indian - NH	56	0.29%	56	0.31%	50	0.27%	58	0.30%	39	0.20%	259	0.27%
Asian - NH	1522	5.93%	2672	10.49%	1866	7.21%	1664	6.53%	2655	10.51%	10379	8.12%
Pacific Islander - NH	108	0.57%	122	0.67%	88	0.47%	109	0.56%	70	0.36%	497	0.52%
Other - NH	112	0.59%	89	0.49%	116	0.62%	89	0.46%	92	0.47%	498	0.52%
Multiple Races - NH	1072	5.64%	857	4.69%	957	5.10%	1025	5.26%	976	4.99%	4887	5.14%
CVAP	16513		15014		16963		17667		19444		85601	
Hispanic	4130	25.01%	4001	26.65%	4049	23.87%	2863	16.21%	2922	15.03%	17965	20.99%
White - NH	8646	52.36%	6989	46.55%	9550	56.30%	12189	68.99%	12444	64.00%	49818	58.20%
Black - NH	1251	7.58%	1542	10.27%	1275	7.52%	948	5.37%	1492	7.67%	6508	7.60%
American Indian - NH	89	0.54%	69	0.46%	152	0.90%	90	0.51%	41	0.21%	441	0.52%
Asian - NH	1194	7.23%	1945	12.95%	1076	6.34%	1064	6.02%	1837	9.45%	7116	8.31%
Pacific Islander - NH	167	1.01%	31	0.21%	104	0.61%	56	0.32%	127	0.65%	485	0.57%
Multiple Races - NH	1036	6.27%	437	2.91%	757	4.46%	457	2.59%	581	2.99%	3268	3.82%

NH = Not of Hispanic Origin
CVAP = Citizen Voting Age Population

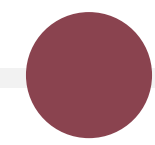
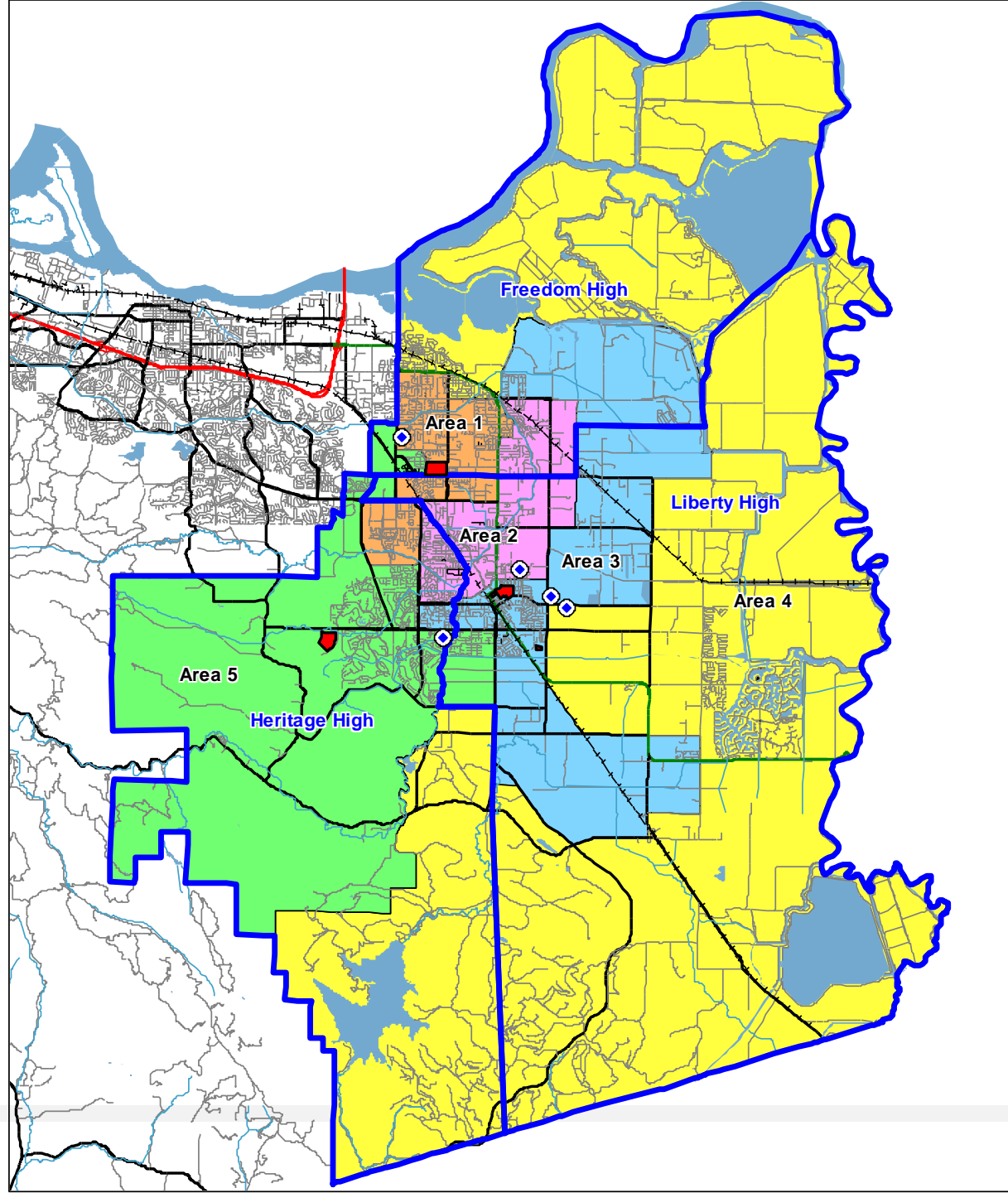
Trustee Area Boundary Map C



Trustee Area Map C

High School Boundaries (blue lines)

School Sites (red)



Total Population and % Deviation, Map C

**Liberty Union High School District
Census 2020 Data Summary by Trustee Areas
Plan C**

Total Population Statistics

Area:	1	2	3	4	5	Total
Trustees:	1	1	1	1	1	5
Population	25,298	25,539	25,748	25,879	25,309	127,773
% of Total Pop.	19.80%	19.99%	20.15%	20.25%	19.81%	
Ideal Pop.	25,555	25,555	25,555	25,555	25,555	
Ideal Pop. %	20.00%	20.00%	20.00%	20.00%	20.00%	
						Peak
Deviation	-257	-16	193	324	-246	581
Dev %	-1.00%	-0.06%	0.76%	1.27%	-0.96%	2.27%

Peak Deviation may not exceed 10%.

Demographics by Trustee Area, Map C

Census Data by Trustee Area including Racial/Ethnic details
Plan C

Area:	1	%	2	%	3	%	4	%	5	%	Total	%
Trustees:	1		1		1		1		1		5	
Total Population	25298		25539		25748		25879		25309		127773	
Hispanic	8325	32.91%	8824	34.55%	8231	31.97%	6963	26.91%	4940	19.52%	37283	29.18%
White - NH	10259	40.55%	9951	38.96%	10739	41.71%	14393	55.62%	13345	52.73%	58687	45.93%
Black - NH	1710	6.76%	1987	7.78%	1921	7.46%	1285	4.97%	1593	6.29%	8496	6.65%
American Indian - NH	60	0.24%	75	0.29%	66	0.26%	84	0.32%	55	0.22%	340	0.27%
Asian - NH	3112	12.30%	2849	11.16%	2756	10.70%	1274	4.92%	3543	14.00%	13534	10.59%
Pacific Islander - NH	151	0.60%	108	0.42%	149	0.58%	124	0.48%	83	0.33%	615	0.48%
Other - NH	140	0.55%	172	0.67%	172	0.67%	127	0.49%	133	0.53%	744	0.58%
Multiple Races - NH	1541	6.09%	1573	6.16%	1714	6.66%	1629	6.29%	1617	6.39%	8074	6.32%
18+ Population	18430		18381		18463		20010		19784		95068	
Hispanic	5585	30.30%	5960	32.42%	5420	29.36%	4685	23.41%	3433	17.35%	25083	26.38%
White - NH	8060	43.73%	7631	41.52%	8329	45.11%	11970	59.82%	11272	56.98%	47262	49.71%
Black - NH	1248	6.77%	1452	7.90%	1380	7.47%	935	4.67%	1188	6.00%	6203	6.52%
American Indian - NH	42	0.23%	56	0.30%	44	0.24%	76	0.38%	41	0.21%	259	0.27%
Asian - NH	2335	9.23%	2179	8.53%	2097	8.14%	1079	4.17%	2689	10.62%	10379	8.12%
Pacific Islander - NH	122	0.66%	96	0.52%	121	0.66%	102	0.51%	56	0.28%	497	0.52%
Other - NH	87	0.47%	108	0.59%	118	0.64%	91	0.45%	94	0.48%	498	0.52%
Multiple Races - NH	951	5.16%	899	4.89%	954	5.17%	1072	5.36%	1011	5.11%	4887	5.14%
CVAP	15996		14668		15556		19443		19938		85601	
Hispanic	4089	25.56%	3566	24.31%	3943	25.35%	3531	18.16%	2836	14.22%	17965	20.99%
White - NH	8221	51.39%	7551	51.48%	8462	54.40%	12947	66.59%	12637	63.38%	49818	58.20%
Black - NH	1379	8.62%	1524	10.39%	1288	8.28%	1031	5.30%	1286	6.45%	6508	7.60%
American Indian - NH	74	0.46%	60	0.41%	160	1.03%	117	0.60%	30	0.15%	441	0.52%
Asian - NH	1459	9.12%	1256	8.56%	1126	7.24%	1001	5.15%	2274	11.41%	7116	8.31%
Pacific Islander - NH	68	0.43%	31	0.21%	93	0.60%	155	0.80%	138	0.69%	485	0.57%
Multiple Races - NH	706	4.41%	680	4.64%	484	3.11%	661	3.40%	737	3.70%	3268	3.82%

NH = Not of Hispanic Origin
CVAP = Citizen Voting Age Population

SUMMARY OF PLANS

The plans in this report were created by considering all of the guidelines for drawing trustee areas with a requirement to balance the population in each trustee area. If the peak deviation has a value of less than 10% then it is a viable option. Each scenario includes one trustee in each boundary.

- Plan A = 7.05% peak deviation, elementary boundary lines were considered in this map
- Plan B = 2.42% peak deviation, high school boundary lines were considered in this map
- Plan C = 2.27% peak deviation, each trustee in this map has territory from each of the three high schools

CONCLUSION / NEXT STEPS

These Maps show possible solutions for the board to consider when establishing trustee areas for each of its trustees.

Additional maps can be generated based on input from the board and the community.

Once a final decision is made to approve a boundary map, the map will need to be submitted to the County Committee for review and approval.

THANK YOU

Questions?
Input/Suggestions?